

SB-400P

SIDE BY SIDE WITH PEDESTAL

■ Display

24" Display

■ Computer (Example of configuration)

CPU : 1,91 GHz, quad core, Intel Atom E3845

Memory : up to 16 GB on DDR3L technology

Storage : SSD, HDD, CFast, CF, removable or not

■ Physical features

Console dimensions : 1350 (W) × 1350 (H) × 870 (D) mm

Console weight : 130 kg

Standard color : Fine textured, semi-gloss, black

■ Electrical features

Power supply : 115-230 Vac, 50/60 Hz (compliant with STANAG 1008) or 18-36 Vdc (compliant with MIL-STD-1275D)

EMI/EMC : CE marking (MIL-STD-461F optional)

■ Environmental conditions

Operating temperature : - 10°C to +55°C (MIL-STD-810G)

Storage temperature : -30°C to +70°C (MIL-STD-810G)

Humidity : 95%, non-condensing (MIL-STD-810G)

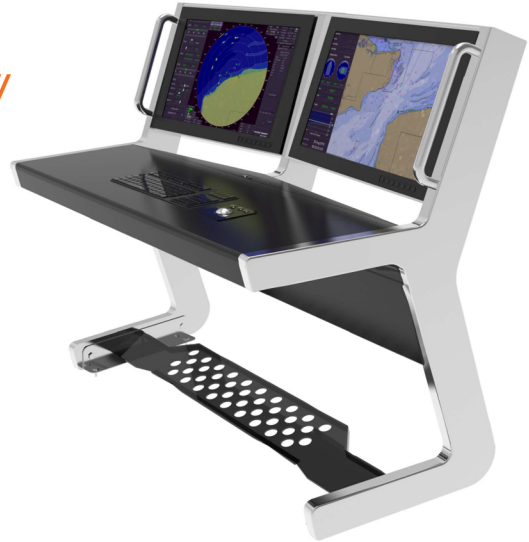
Shock : 15G, 11 ms (MIL-STD-810G ; MIL-S-901D optional)

Noise : <53dBA(MIL-STD-740-1)

Vibration : MIL-STD-167-1A

Pitch/Roll : +/- 30° (MIL-HDBK 2036)

Protection rating : IP55



■ I/O

Video (frame grabber) : PAL, NSTC, DVI, HD-SDI

Data : Gbe LAN, USB 2.0, USB 3.0, COM

Specific : GPS, CAN, OBD

MMIs

QWERTY or AZERTY keyboard

Control panel (to be configured)